

# Topaze Quick Start Guide

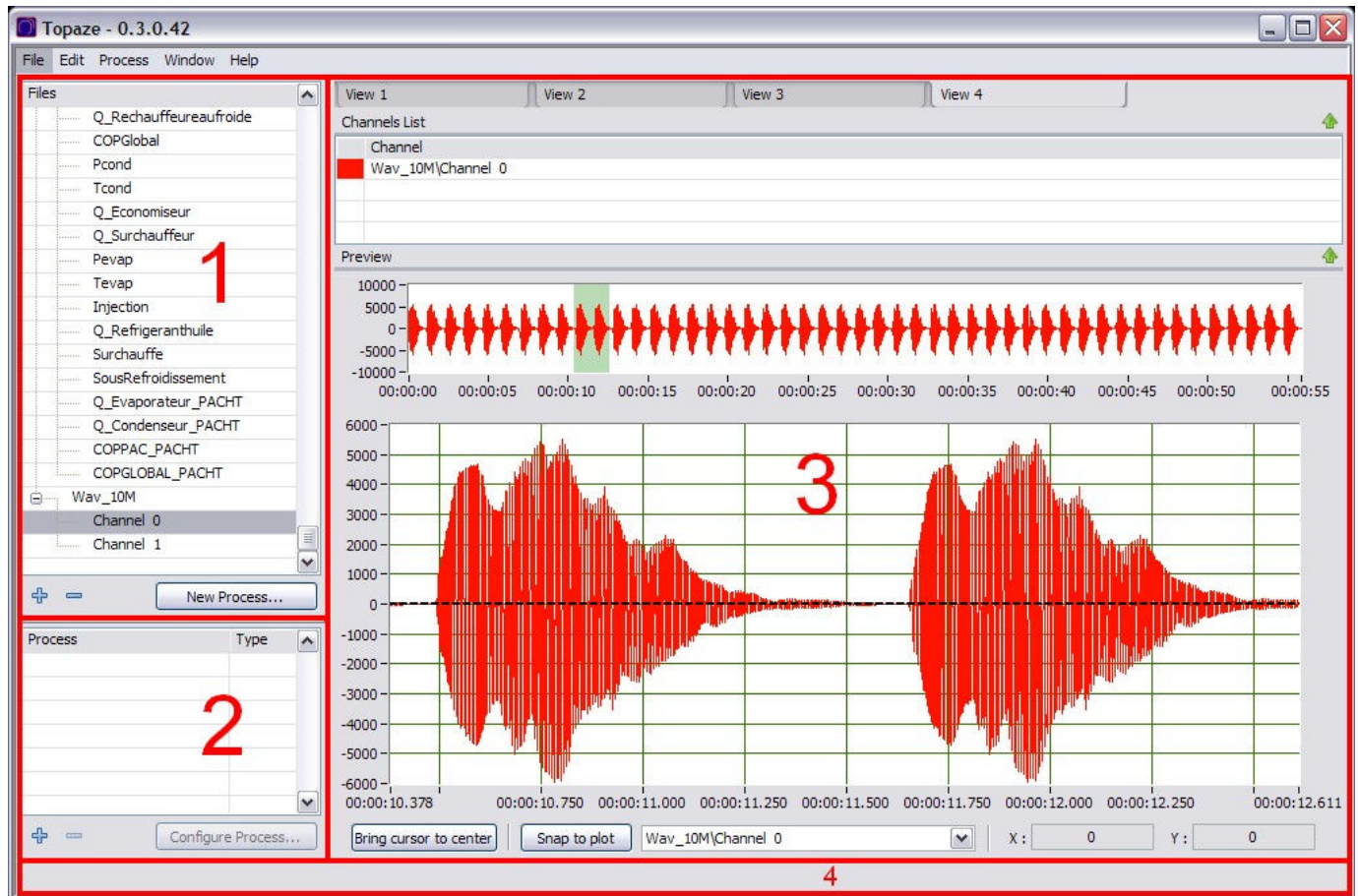
Topaze allows multiple data file formats visualization.

Supported file formats in Topaze:

- Generic format: aiff, wav, mto
- Specific format: sPAC, AMD, LPTCe and your own format following specifications<sup>1</sup>

## User interface

Four main areas help you navigate through your data:

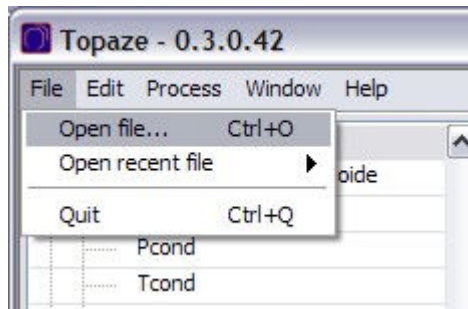


- 1 – File list
- 2 – Process list
- 3 – Display area
- 4 – Status bar

## Open file

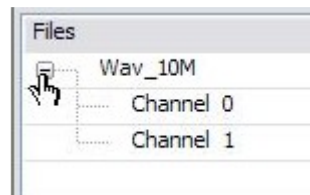
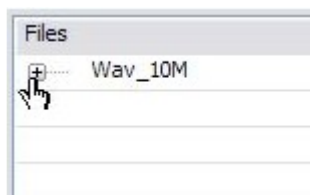
Select “*Open file...*” item from “*File*” menu and then select files to open from the explorer dialog. It will be imported on condition that the file does respect one known format.

<sup>1</sup> Contact us on [www.saphir.fr](http://www.saphir.fr)



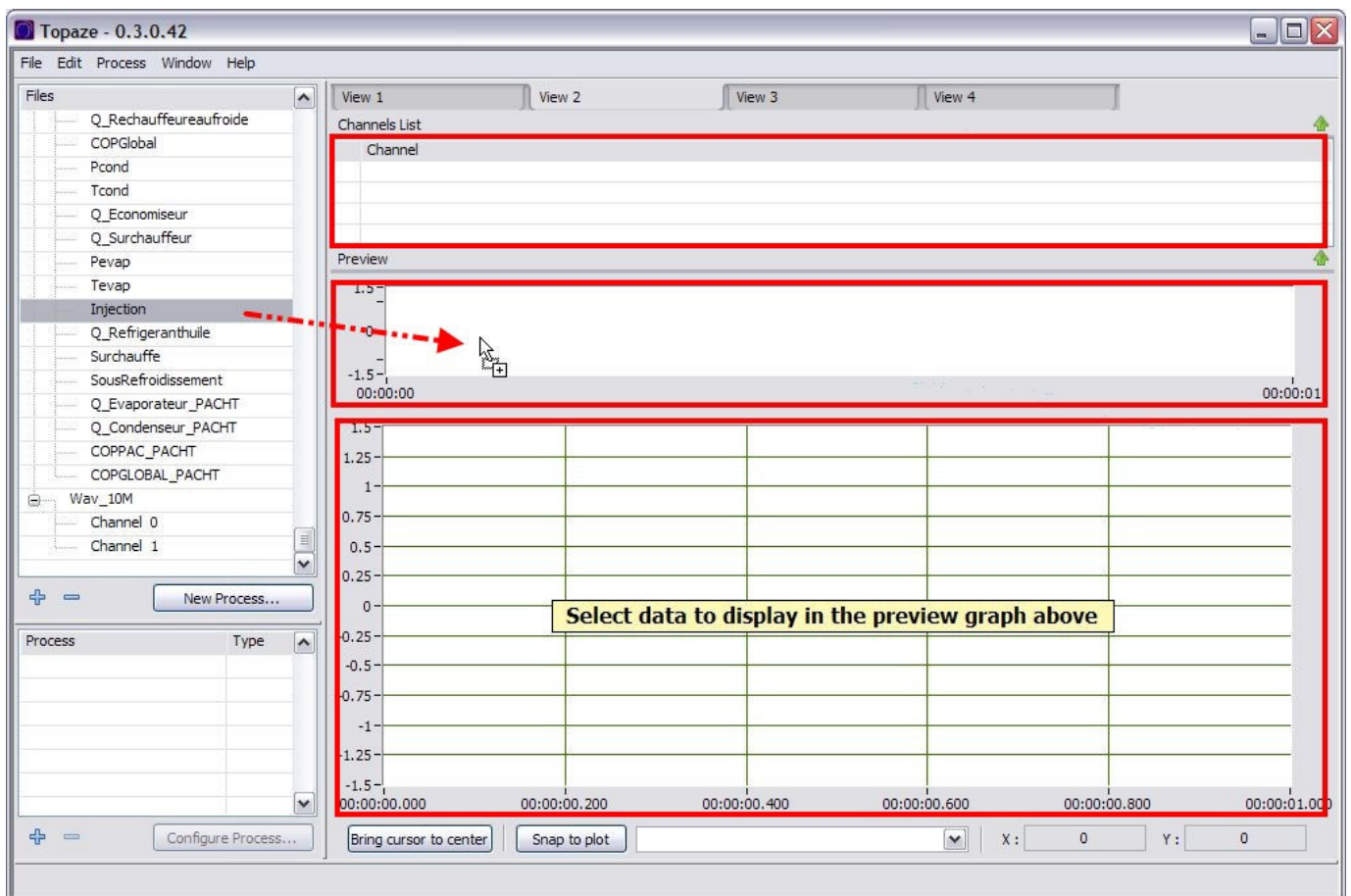
The File list area supports dropping file directly from the explorer into the list.

Expand file item from this list in order to show all channels contained in the file.



## Display signals

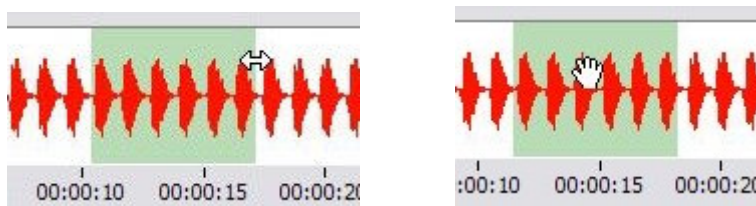
Drag channel or file from the File list and drop it over the Display area



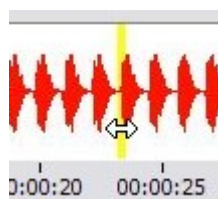
## Browse through your signals

The Preview graph summarizes the whole signals.

To dynamically display a region of interest into the main graph below, just draw and move the window from the Preview.



Before any selection, you can quickly zoom in the signal by moving the mouse cursor (yellow selection) over the Preview graph



You can move selection block by block using “Ctrl + Left/Right arrow” keys.

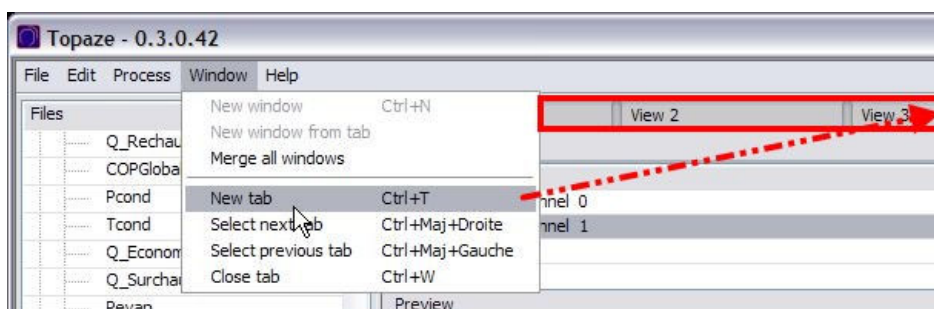
### Remove signal from view

Select one or more channel in Channel list, right click and select “Remove” item.



### Manage tabs

Create tabs as you want to display signals in different views using “New tab” from “Window” menu or typing “Ctrl +T” shortcut.



Tabs can be reordered.



Tabs can be detached from the main window to be displayed on another screen or to be maximized. Use “Merge all windows” from “Window” menu to reintegrate all tabs into the main window.